

BONALDO

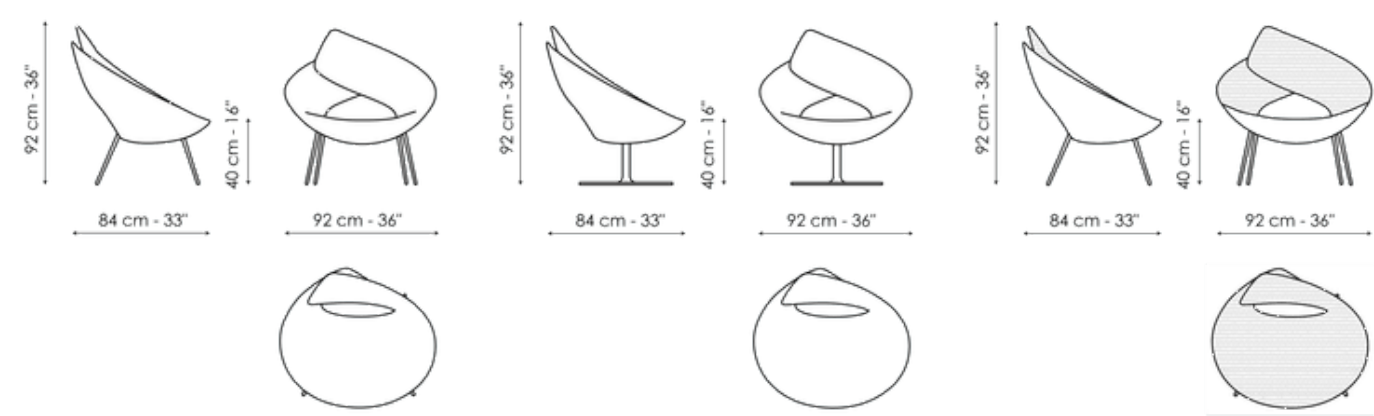
Lock



"I think the feeling of safety is something we seek everywhere. It is what distinguishes a welcoming and familiar setting, such as one's home, making it different from any other place," comments Alessandro Busana, designer of the Lock armchair. A furnishing element where the person takes the center stage, which develops around the user through a padded strip that folds onto itself in order to form a backrest. The upholstery, in fabric, eco-leather or leather, is fully removable and is available in one-colour or two-colour (different for the front part of the seat and the backrest) versions. For the lower part of the armchair, in painted metal, one can opt for four thin legs or for an original swivel base. The Lock ego version with quilting is also available.



Data sheet



Lock

Width: 92cm
Depth: 84cm
Height: 92cm

Lock swivel base

Width: 92cm
Depth: 84cm
Height: 92cm

Lock ego

Width: 92cm
Depth: 84cm
Height: 92cm



Lock ego swivel base

Width: 92cm
Depth: 84cm
Height: 92cm

Footrest

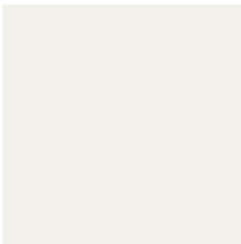
Width: 63cm
Depth: 44cm
Height: 44cm

Footrest ego

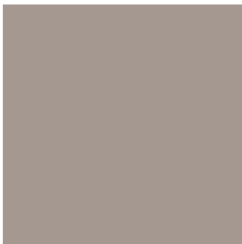
Width: 63cm
Depth: 44cm
Height: 44cm

Finishes

Base



Painted metal
Mat white



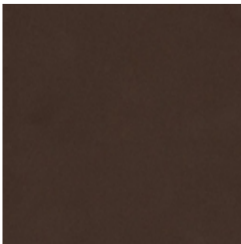
Painted metal
Mat dove grey



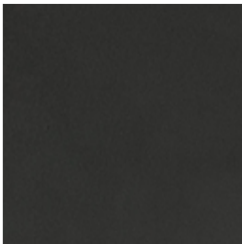
Painted metal
Supreme anthracite



Painted metal
Mat black



Painted metal
Mat bronze



Painted metal
Mat lead



Painted metal
Mat copper



Painted metal
Mat brass



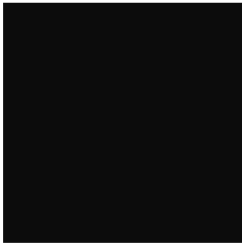
Painted metal
Mat pearl gold



Metal finish
Clouded chrome



Metal finish
Brown nickel



Metal finish
Dark nickel

Materials, fabrics, leathers, colors and finishes are approximate and may slightly differ from actual ones. You can find the complete collection of Bonaldo fabrics and leathers on the website <https://bonaldo.biz>